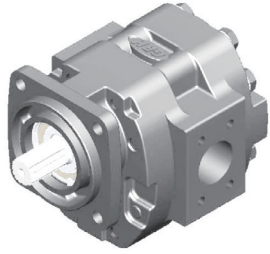


## 4PF\*\*F\*\*S83S20L



型号	排量 (ml/r)	压力(bar)		转速(r/min)			L (mm)	L1 (mm)
		额定	最高	额定	最高	最低		
4PF66F161S83S20L	66	210	250	1800	2200	600	197.3	121.0
4PF83F161S83S20L	83	210	250	1800	2200	600	203.5	124.1
4PF91F161S83S20L	91	210	250	1800	2200	600	207.3	126.0
4PF99F161S83S20L	99	210	250	1800	2200	600	209.8	127.2
4PF116F161S83S20L	116	210	250	1800	2200	600	217.3	130.9
4PF132F161S83S20L	132	210	250	1800	2200	600	222.6	133.5
4PF145F161S83S20L	145	210	250	1800	2200	600	227.8	136.1
4PF149F161S83S20L	149	210	250	1800	2200	600	229.3	136.8
4PF166F161S83S20L	166	210	250	1800	2200	600	235.3	139.8
4PF182F161S83S20L	182	180	210	1800	2200	600	241.3	142.8
4PF199F161S83S20L	199	180	210	1800	2200	600	248.3	146.3

## 外形尺寸

### 4PF\*\*F\*\*S83S20L

