

GWD Series Hydraulic Motors

Options

- Rotor flow distribution, geroler type
- Geroler type
- Motor with needle bearing
- Align the ports on the side
- Straight, splined and tapered shafts
- High pressure seal
- Metric, SAE and BSPP ports

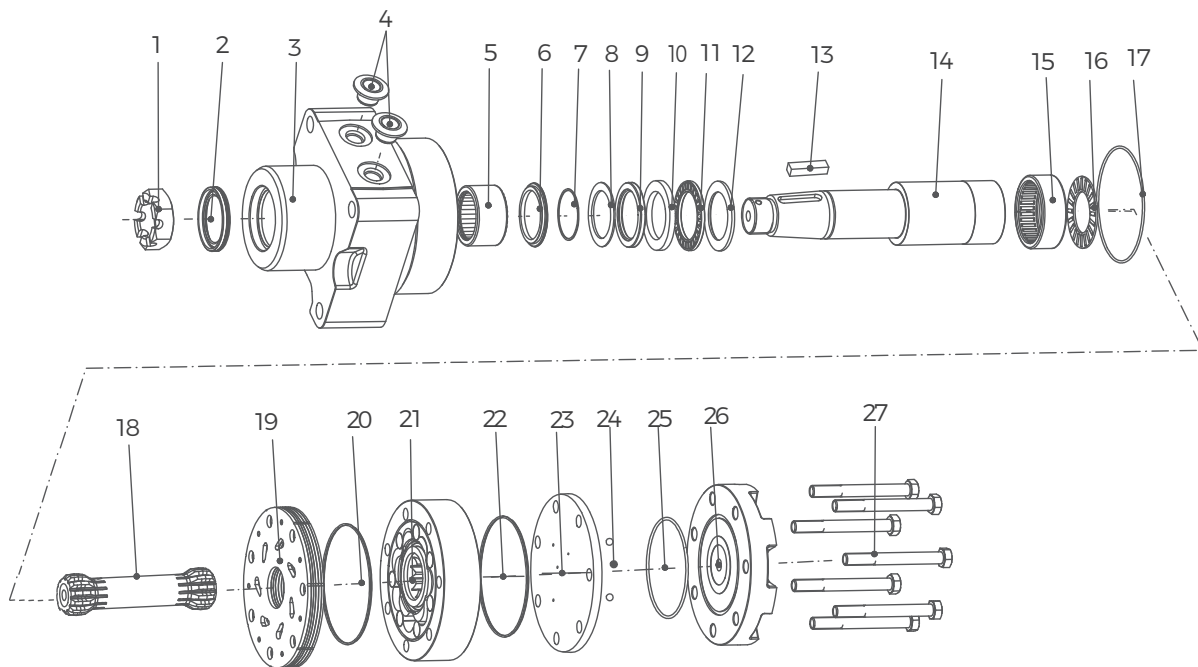
Applications

- Aerial work platform
- Material handling and lifting machines
- Agricultural machines
- Marine machines
- Road machines
- Garden machines
- Lawn and turf machines



General

Max. Displacement	cm ³ /rev [in ³ /rev]	748[45.6]
Max. Speed	RPM	490
Max. Torque	daNm [lb-in]	cont.: 106.2[9400] int.: 123.7[10950]
Max. Pressure Drop	bar [PSI]	cont.: 205 [3000] int.: 300 [4500]
Max. Oil Flow	lpm [GPM]	276[72.9]
Pressure fluid		Mineral based- HLP (DIN 51524) or HM (ISO 6743/4)
Temperature Range	°C [°F]	-40÷140 [-40÷284]
Optimal Viscosity range	mm ² /s [SUS]	20÷75 [98÷347]
Filtration		ISO code 20/16 (Min. recommended fluid filtration of 25 microns)



- | | | | | |
|-------------------------|---------------------|-------------------------------|-----------------------|---------------|
| 1 Castle nut | 7 O-ring | 13 Flat key | 19 Distribution plate | 26 Rear cover |
| 2 Shaft seal | 8 Washer | 14 Output shaft | 20 Special shape ring | 27 Screw |
| 3 Housing | 9 shaft seal | 15 Rear needle roller bearing | 22 Special shape ring | |
| 4 Oil port plug cap | 10 Bearing retainer | 16 Flat bearing | 23 Balance plate | |
| 5 Needle roller bearing | 11 Flat bearing | 17 O-ring | 24 Steel ball | |
| 6 Bearing | 12 Bearing retainer | 18 Transmission shaft | 25 O-ring | |

Ordering Code

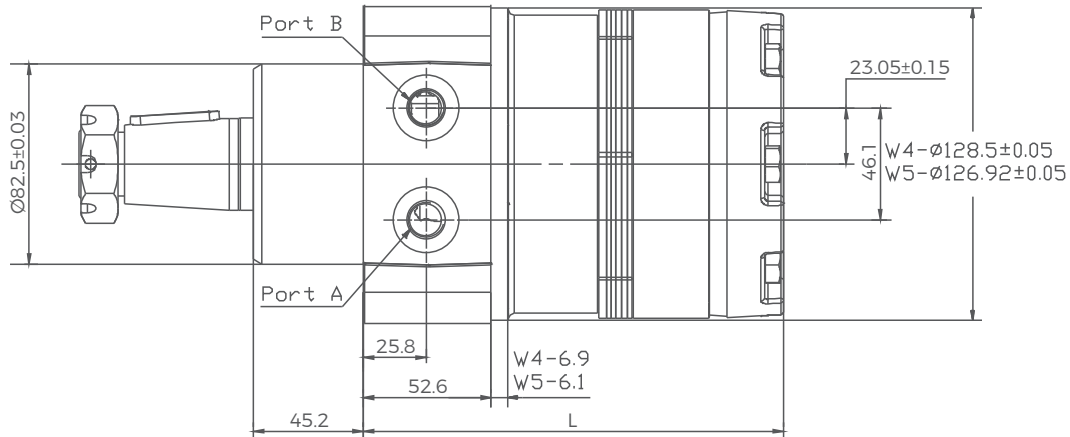
GWD SERIES		DISP		FLANGE		SHAFT		PORTS		ROTATION		PAINT		FUNCTION												
CODE	DISP	CODE	FLANGE	CODE	SHAFT	CODE	PORTS	CODE	PAINT	CODE	FUNCTION	CODE	ROTATION													
120	121cm ³ /rev	W4	Wheel Ø147.6 4- Ø13.1 rear pilot Ø128.5×7	SH	Ø35 parallel key 10×8×45	UD	9/16-18UNF	A	No paint	TB	Ø35 parallel key 7.96×7×31.5	A	Standard													
160	162cm ³ /rev		Wheel Ø147.6 4- Ø13.1 Rear pilot Ø127×7		SL	Ø38.1 parallel key 9.5×9.5×38.1	UF		7/8-14UNF		B		Blue	TA	Tapered Ø38.1 parallel key 7.96×7×36.5	R	Opposite									
200	204cm ³ /rev		A9			6- Ø13.5 SAE Ø106.4 pilot Ø82.5×2.8	T2		Tapered Ø31.75 parallel key 7.96×7×25.4				GC		G1/2		C	Black	RQ	Ø25.3 Splined 6-25.3×21×6.2						
230	232cm ³ /rev					W5			Ø147.6 square 4- Ø13.5 pilot Ø82.5×2.8				TB		RQ			MC		M22×1.5	S	Silver grey				
260	261cm ³ /rev																									
300	300cm ³ /rev																									
350	348cm ³ /rev																									
375	363cm ³ /rev																									
470	465cm ³ /rev																									
540	536cm ³ /rev																									
620	631cm ³ /rev																									
750	748cm ³ /rev																									

Specifications

Type		GWD120	GWD160	GWD200	GWD230	GWD260	GWD260
Disp. cm ³ /rev.		121	162	204	232	261	261
Max. Speed	Cont	360	370	300	260	260	260
RPM	Int.	490	470	370	320	350	350
Max. Flow	Cont	45	61	68	68	76	76
LPM	Int.	61	76	83	83	91	91
Max. Torque	Cont	327	475	542	611	712	712
Nm	Int.	383	542	633	712	791	791
Max. Pressure Drop	Cont	207	207	207	207	207	207
bar	Int.	241	241	241	241	241	241
	Peak	276	276	276	276	276	276
Max. No-load Pressure	bar	8	10	10	10	10	10
Min Operating Nm	Drop Cont	235	342	390	440	513	513
Torque At Max. Pres.	Drop Int.	280	396	462	520	577	577
Weight kg	GWD	13.3	13.3	13.7	13.8	14.1	14.1

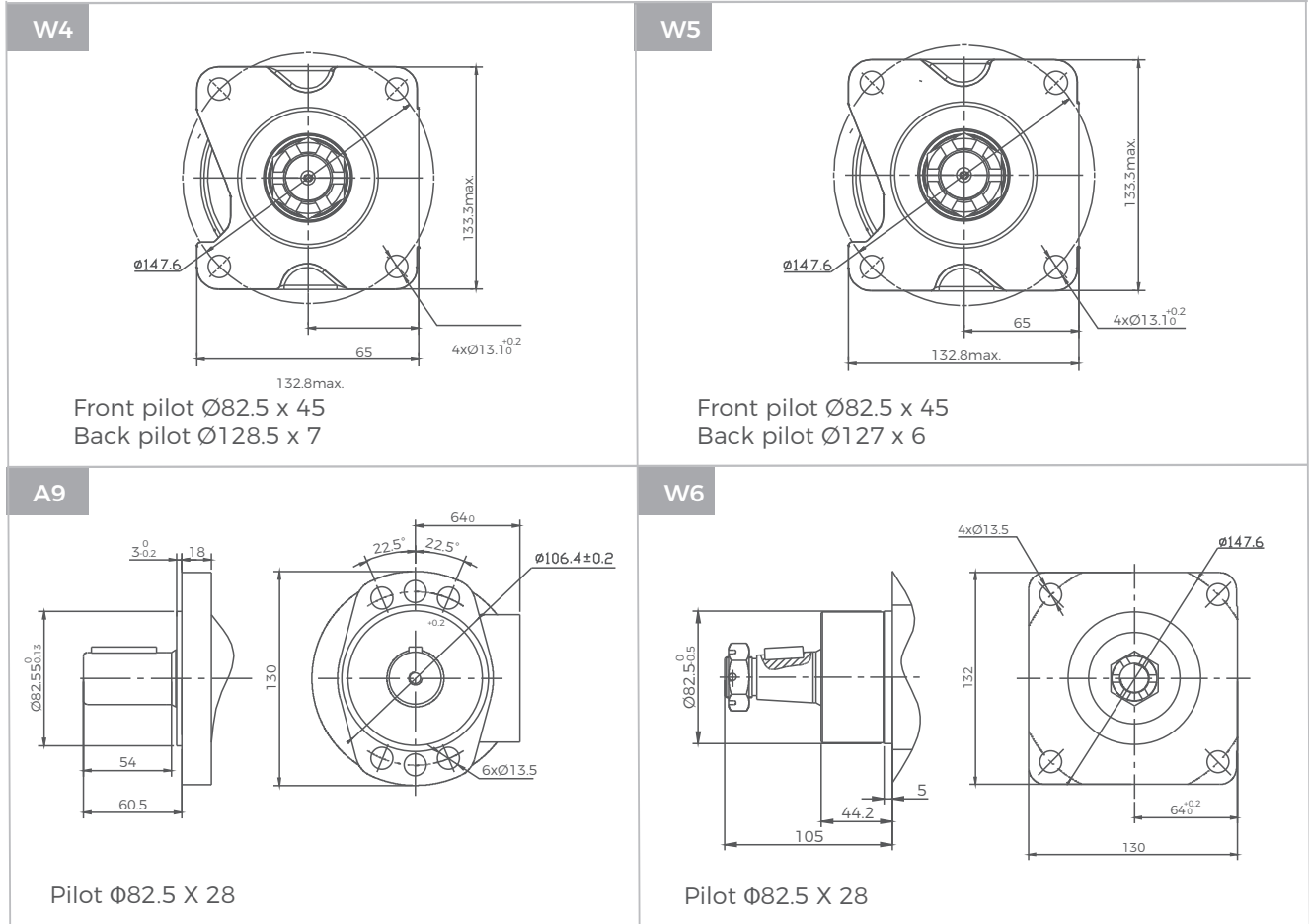
Type		GWD350	GWD375	GWD470	GWD540	GWD620	GWD750
Disp. cm ³ /rev.	cm ³ /rev.	348	363	465	536	631	748
Max. Speed	Cont	220	200	160	140	120	100
RPM	Int.	270	250	200	170	150	130
Max. Flow	Cont	76	76	76	76	76	76
LPM	Int.	95	91	91	91	91	91
Max. Torque	Cont	921	1006	1096	983	1014	1062
Nm	Int.	1045	1158	1184	1243	1291	1237
Max. Pressure Drop	Cont	207	207	172	138	121	103
bar	Int.	241	241	189	173	155	121
	Peak	276	276	207	207	173	138
Max. No-load Pressure	bar	10	10	10	12	12	12
Min Operating Nm	Drop Cont	663	724	822	737	761	797
Torque At Max. Pres.	Drop Int.	763	845	900	945	981	940
Weight kg	GWD	15.5	15	15.5	16.1	16.8	17.5

GWD Dimensions and Mountings



Model	L	Weight
	mm[In]	kg[lb]
GWD120	156[6.14]	13.3[29.4]
GWD160	156[6.14]	13.3[29.4]
GWD200	159[6.26]	13.7[30.2]
GWD230	162[6.38]	13.8[30.4]
GWD260	165[6.50]	14.1[31.0]
GWD300	168[6.61]	14.4[31.8]
GWD350	172[7.17]	15.5[29.4]
GWD375	174[6.85]	15.0[33.0]
GWD470	182[7.17]	15.5[34.2]
GWD540	188[7.40]	16.1[35.4]
GWD620	196[7.72]	16.8[36.9]
GWD750	206[8.11]	17.5[38.5]

GWD Flange Covers Dimensions



GWD Shafts Dimensions

<p>TB</p> <p>Tapered shaft $\varnothing 35$ Parallel key 7.96 x 7 x 31.5 Tightening torque: 325 Nm</p>	<p>TA</p> <p>Tapered shaft $\varnothing 38.1$ Parallel key 7.96 x 7 x 36.5 Tightening torque: 410-540 Nm</p>
<p>SL</p> <p>Straight shaft $\varnothing 38.1$ Parallel key 9.5 x 9.5 x 38.1</p>	<p>SH</p> <p>Straight shaft $\varnothing 35$ Parallel key 10 x 8 x 45</p>
<p>T2</p> <p>Tapered shaft $\varnothing 31.75$ Parallel key 7.96 x 7.96 x 25.4 Tightening torque: 200 ± 10 Nm</p>	<p>RQ</p> <p>Splined shaft 6-25.3 x 21 x 6.2</p>

GWD Series Hydraulic Motors

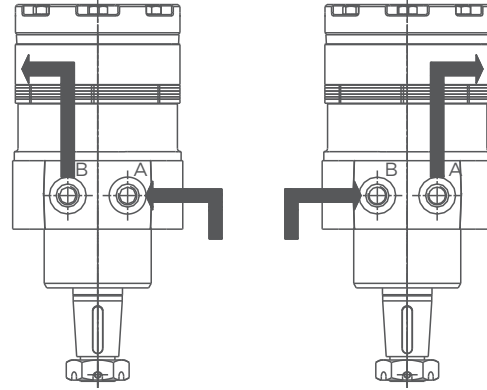
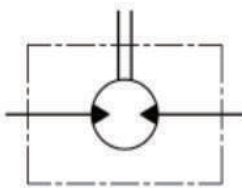
Shaft Rotation Direction: Standard

When looking at the shaft end of motor, shaft will rotate:

-Clockwise.

When port B is pressurized.

-Counter-clockwise when port A is pressurized.



W4 & W5 Wheel Mounts

