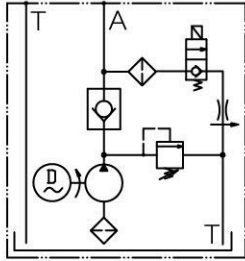
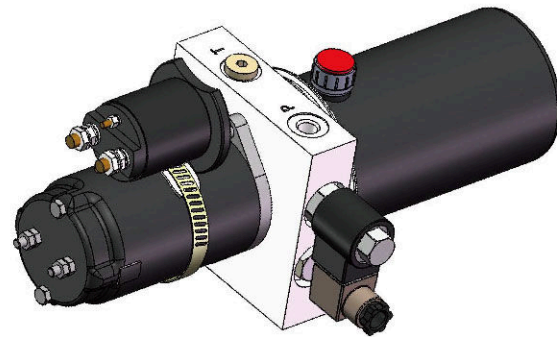
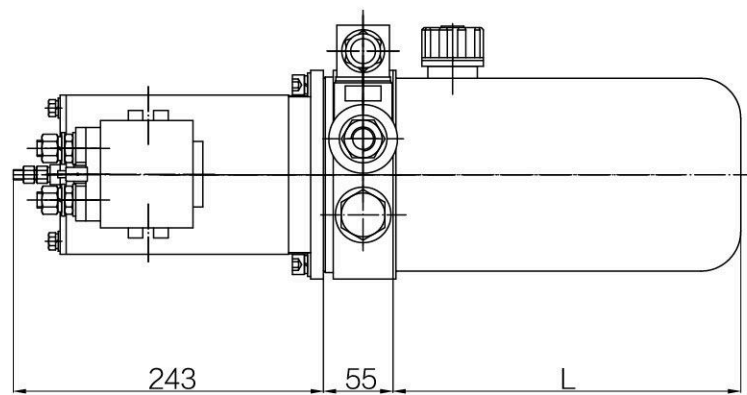
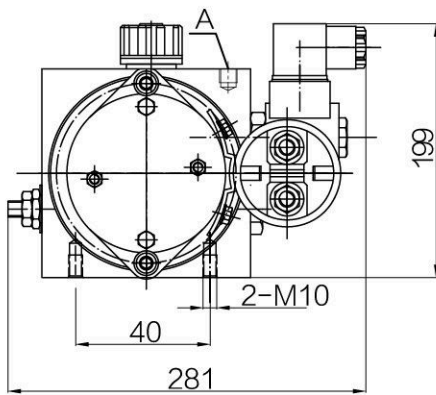


## Power Unit for Pallet Truck



This hydraulic power unit is made up of high pressure gear pump, AC motor, multi-manifold, hydraulic valve, oil tank, etc. It used at the power origin of light fork truck and pallet truck. Electromagnetic unloading valve unloading to oil return, decline speed is controlled by pressure compensating flow control valve.



## Specifications

Model	Motor	Disp. (cc/r)	Tank Cap. (L)	Pressure (MPa)	Installation	Port Size	L(mm)
DC-F10-0.50/E-0.8/12/**-1.0H-C	12V 0.8Kw 3450RPM 60Hz	0.50	1.0	16	Horizontal	G1/4	178
DC-F10-0.75/E-0.8/12/**-1.2H-C	12V 0.8Kw 3450RPM 60Hz	0.75	1.2				210
DC-F10-0.50/E-0.8/24/**-1.0H-C	24V 0.8Kw 3450RPM 60Hz	0.50	1.0				178
DC-F10-0.50/E-0.8/24/**-1.7H-C	24V 0.8Kw 3450RPM 60Hz	0.75	1.7				170

Specific parameters can be customized according to customer requirements.

VL

SL

WP

SS

AS

VT

TG

TP

DL

SR

PT

ME