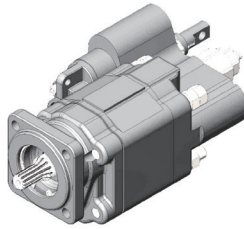


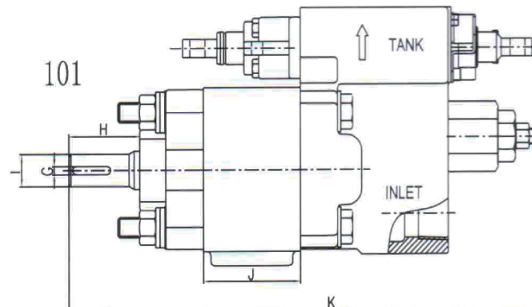
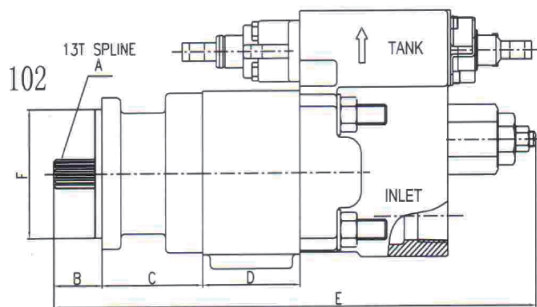
C101 C102 G101 G102 Series Dump Pumps



Model	Teeth Width(in.)	Displacement (ml/r)	Pressure(bar)		Speed(r/min)		Input Power (Kw)	Features
			Rated	Peak	Peak	Min.		
C101-20-MS/AS-R	2	85	175	210	2400	600	78	Double Shaft
C101-25-MS/AS-R	2-1/2	105	175	210	2400	600	89	Double Shaft
C102-20-MS/AS-L	2	85	175	210	2400	600	78	Single Shaft
C102-25-MS/AS-L	2-1/2	105	175	210	2400	600	89	Single Shaft
G101-07-MS/AS-R	3/4	25	175	210	2400	600	27	Double Shaft
G101-20-MS/AS-R	2	65	175	210	2400	600	70	Double Shaft
G102-15-MS/AS-L	1-1/2	50	175	210	2400	600	89	Single Shaft
G102-20-MS/AS-L	2	65	175	210	2400	600	70	Single Shaft

Dimensions

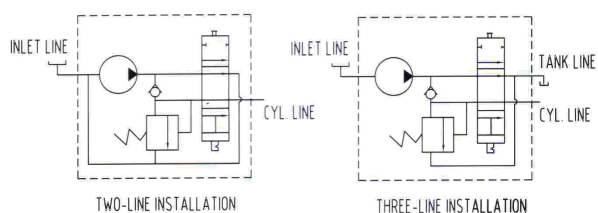
C101 C102 Dump Pump



	A	B	C	D			E	D
G102	SAE B	1.62	2.94	1.50(07)	2.25(15)	2.75(20)	11.25+D	4
C102	SAE B	1.62	3.37	2.75(20)	3.25(25)		13.25+D	4

	G	H	I	J			K
G101	0.25	1.94	1.00	1.50(07)	2.25(15)	2.75(20)	10.43+J
C101	0.25	2.38	1.00	2.75(20)	3.25(25)		12.75+J

Installation and Operation



Air Shifters

