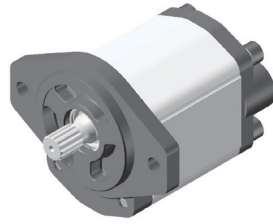


2.8APF**LJ**S71D16L



Model	Displacement (ml/r)	Pressure(bar)		Speed(r/min)			L(mm)
		Rated	Peak	Rated	Max.	Min.	
2.8APF06LJ39S71D16L	06	250	280	2000	4000	800	115.0
2.8APF08LJ39S71D16L	08	250	280	2000	4000	800	117.0
2.8APF10LJ39S71D16L	10	250	280	2000	4000	700	119.0
2.8APF12LJ39S71D16L	12	250	280	2000	3500	700	121.5
2.8APF14LJ39S71D16L	14	250	280	2000	3500	600	123.5
2.8APF16LJ39S71D16L	16	250	280	2000	3500	600	125.5
2.8APF19LJ39S71D16L	19	250	280	2000	3000	500	128.5
2.8APF22LJ39S71D16L	22	250	280	2000	3000	500	132.0
2.8APF25LJ39S71D16L	25	250	280	2000	3000	500	135.0
2.8APF28LJ39S71D16L	28	250	280	2000	3000	500	138.5
2.8APF30LJ39S71D16L	30	230	250	2000	3000	500	140.5
2.8APF32LJ39S71D16L	32	230	250	2000	3000	400	142.5
2.8APF36LJ39S71D16L	36	200	230	1500	2750	400	147.0
2.8APF40LJ39S71D16L	40	200	230	1500	2750	400	151.5
2.8APF43LJ39S71D16L	43	170	190	1500	2500	400	154.5
2.8APF45LJ39S71D16L	45	170	190	1500	2500	400	156.5

Dimensions

2.8APF**LJ39S71D16L

