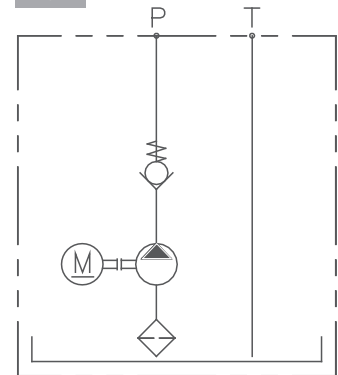


## Aerial Working Platform Power Pack 1

### Introduction

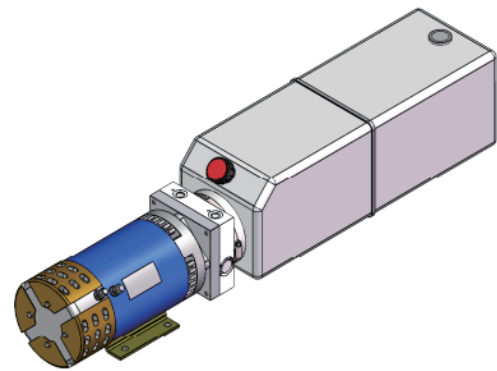
1. High-pressure gear oil pump / DC motor / Extended tank
2. Anti-reverse check valve

F01

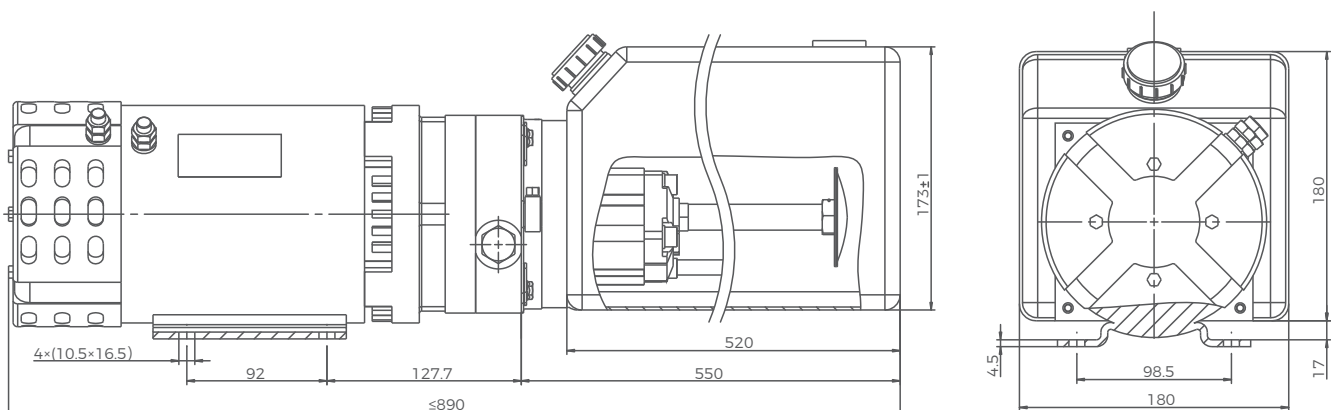


### Technical Data

Model	DC-F01-4.8/F-4.5/48-15PV-C
Voltage	DC48V
Power	4.5kW
Speed	2500rpm
Disp.	4.8cc/r
Pressure	21MPa
Volume	15L
Size	P, T: G1/4



### Drawing



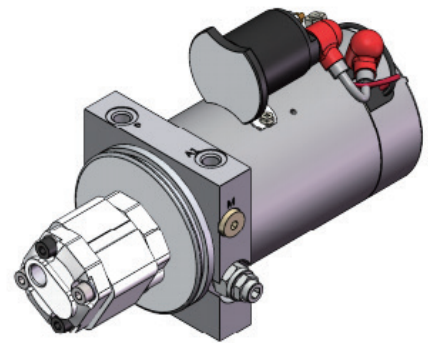
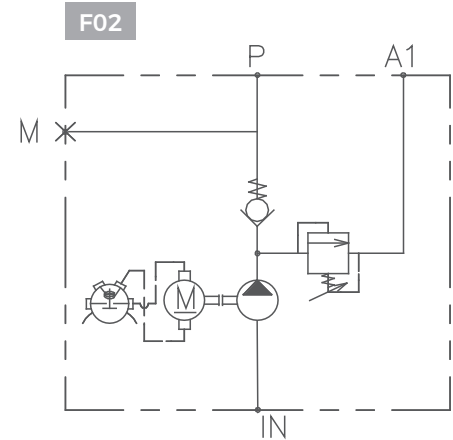
## Aerial Working Platform Power Pack 2

### Introduction

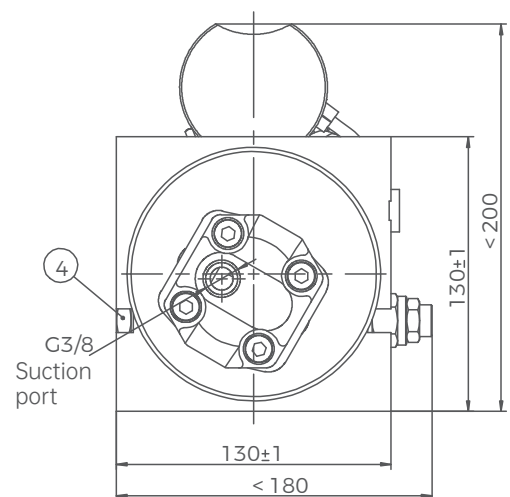
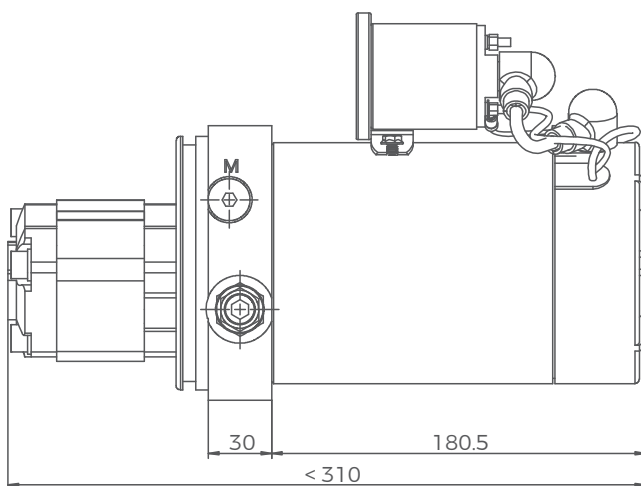
1. High pressure gear oil pump / DC motor / No tank
2. Pressure limiting relief valve

### Technical Data

Model	DC-F02-2.1/F-2.2/12-C
Voltage	DC12V
Power	2.2kW
Speed	2600rpm
Disp.	2.1cc/r
Pressure	21MPa
Volume	Not Applicable
Size	P, A1, M: G1/4; P: G3/8



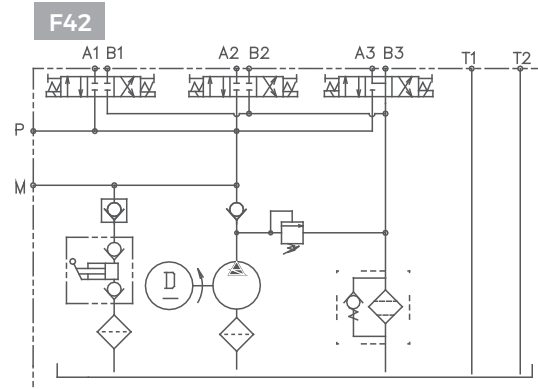
### Drawing



## Aerial Working Platform Power Pack 3

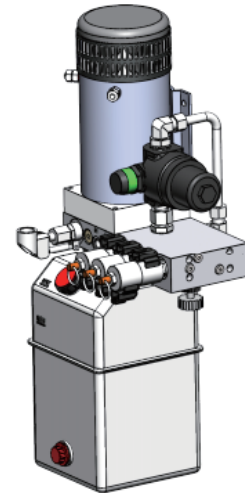
### Introduction

1. High pressure gear oil pump / DC motor / Double acting
2. Emergency manual pump
3. External oil return filter

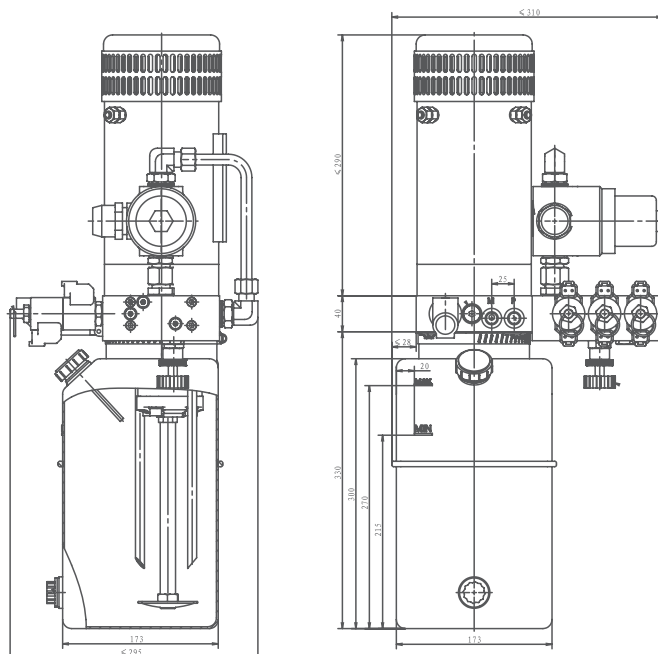


### Technical Data

Model	DC-F42-3.7/E-4/24/24-8PV-C
Voltage	DC24V
Power	4kW
Speed	2700rpm
Disp.	3.7cc/r
Pressure	21MPa
Volume	8L
Size	P, T, A, B, M: G1/4



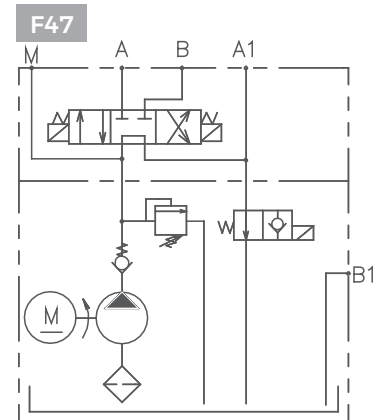
### Drawing



## Aerial Working Platform Power Pack 4

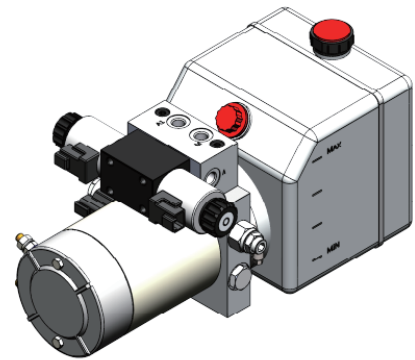
### Introduction

1. High pressure gear oil pump / DC motor / Double acting
2. Plastic oil tank

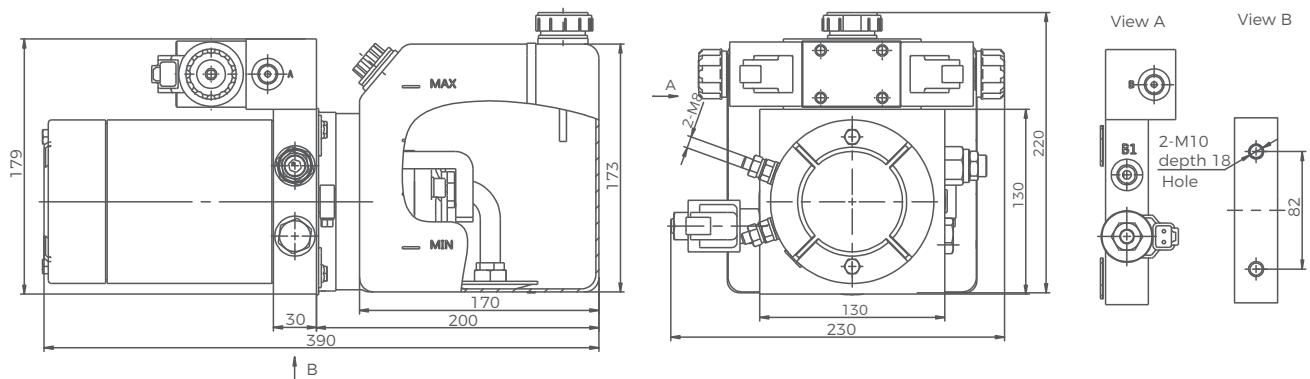


### Technical Data

Model	DC-F47-1.1/E-1.6/24/20-4PH-C-G
Voltage	DC24V
Power	1.6kW
Speed	2900rpm
Disp.	1.1 cc/r
Pressure	14MPa
Volume	4L
Size	A, B, A1, B1, M: G1/4



### Drawing



## Aerial Working Platform Power Pack 5

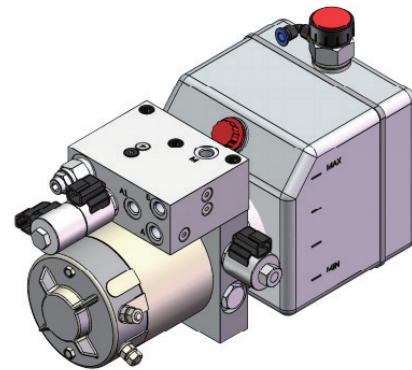
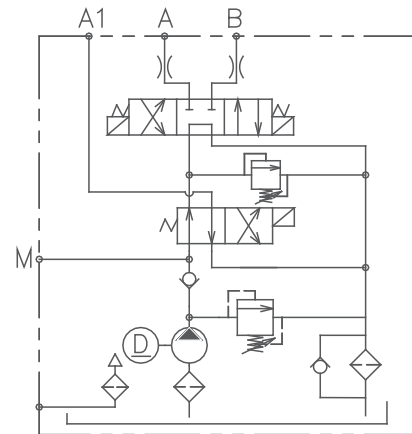
### Introduction

1. High-pressure gear oil pump / DC motor / Double acting
2. Internal filter element

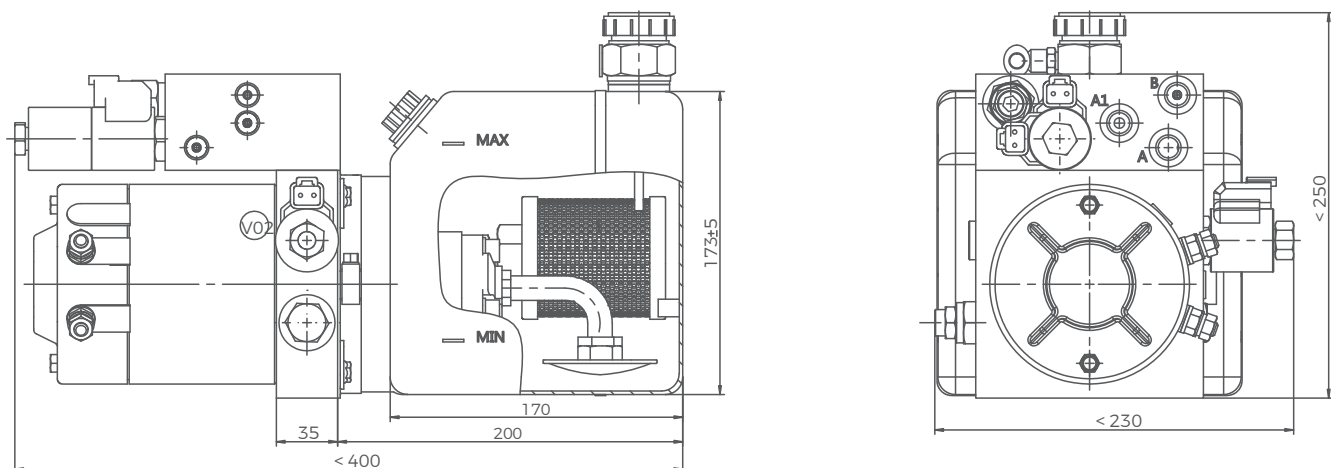
### Technical Data

Model	DC-F55-1.6/E-1.2/24/20-4PH-C
Voltage	DC24V
Power	1.2kW
Speed	3800~4400rpm
Disp.	1.6cc/r
Pressure	15.5MPa
Volume	4L
Size	A, B, A1, M: G1/4

F55



### Drawing



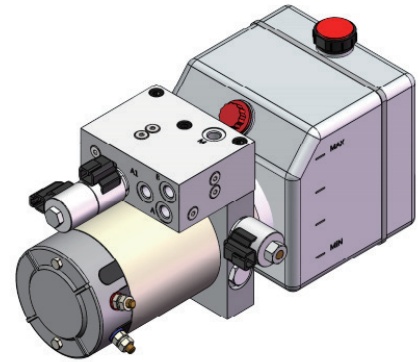
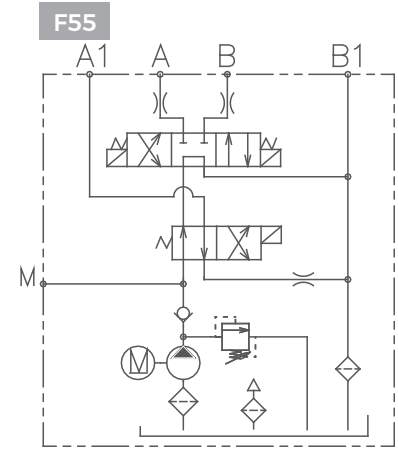
## Aerial Working Platform Power Pack 6

### Introduction

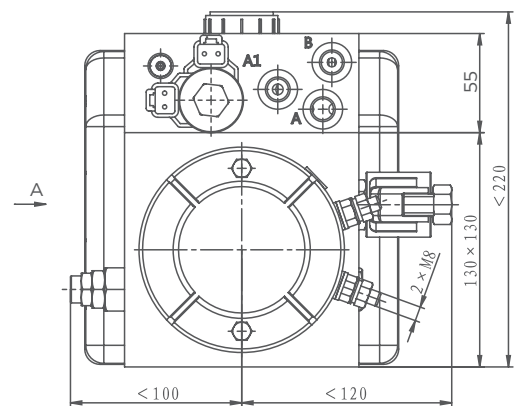
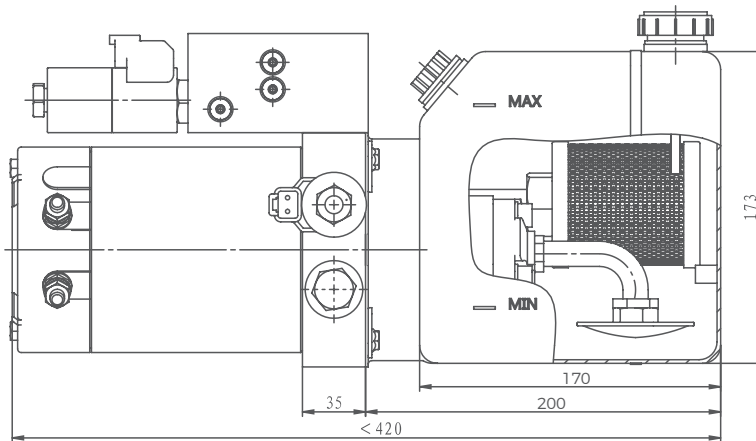
1. High-pressure gear oil pump / DC motor / Double acting
2. Internal filter element

### Technical Data

Model	DC-F55-2.1/E-2.2/24/20-4PH-C
Voltage	DC24V
Power	2.2kW
Speed	2500-2900rpm
Disp.	2.1 cc/r
Pressure	19MPa
Volume	4L
Size	A, B, A1, M, B1: G1/4



### Drawing



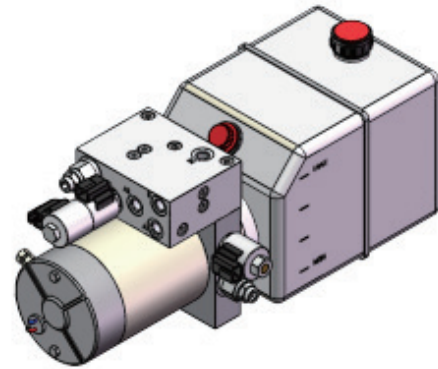
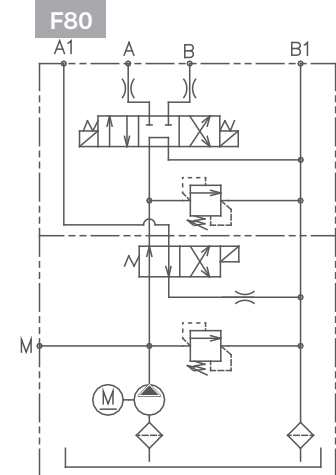
## Aerial Working Platform Power Pack 7

### Introduction

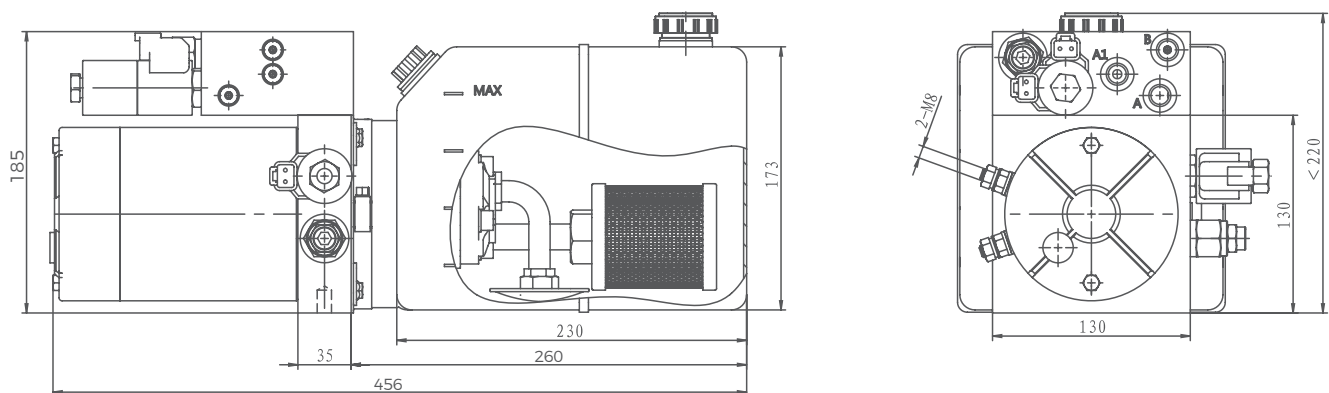
1. High-pressure gear oil pump / DC motor / Double acting
2. Internal filter element

### Technical Data

Model	DC-F80-2.5/F-2.2/24/20-6PH-C1
Voltage	DC24V
Power	2.2kW
Speed	2600rpm
Disp.	2.5cc/r
Pressure	21MPa
Volume	6L
Size	A, B, A1, B1, M: G1/4



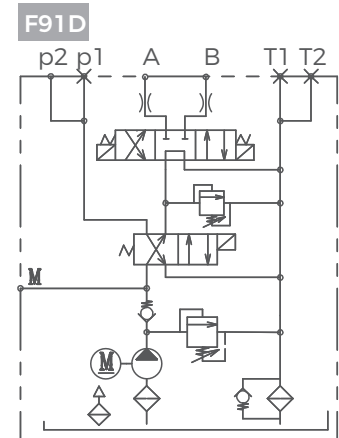
### Drawing



## Aerial Working Platform Power Pack 8

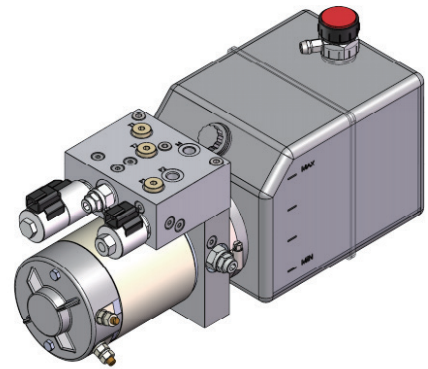
### Introduction

1. High-pressure gear oil pump / DC motor / Double acting
2. Internal filter element
3. Multiple oil return ports

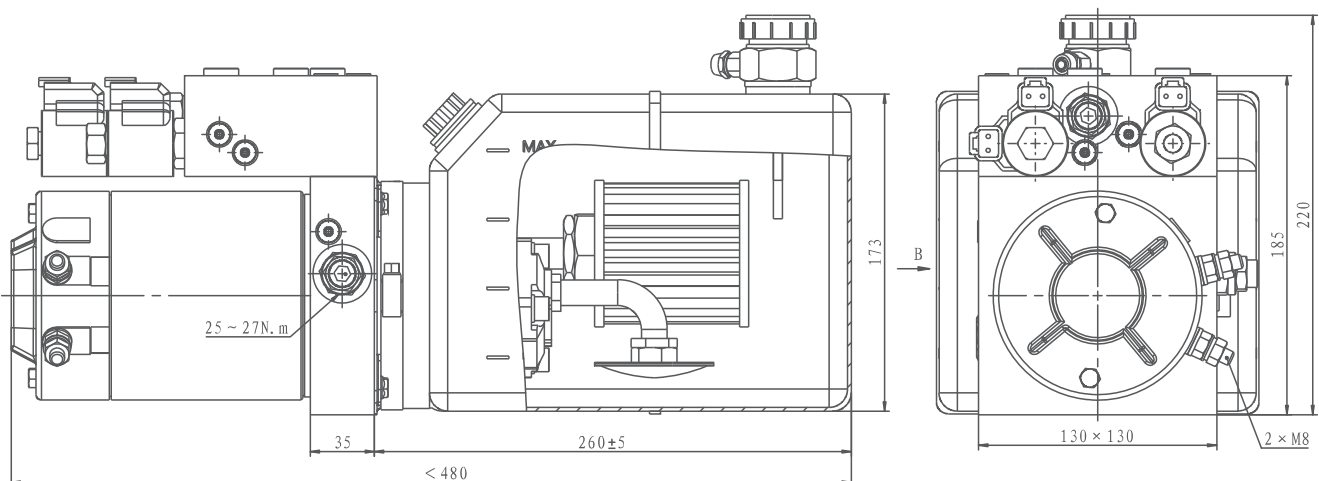


### Technical Data

Model	DC-F91D-3.2/E-2.2/24/20-6PH-C
Voltage	DC24V
Power	2.2kW
Speed	2750rpm
Disp.	3.2cc/r
Pressure	15MPa
Volume	6L
Size	A, B, P1, P2, T1, T2, M: G1/4



### Drawing

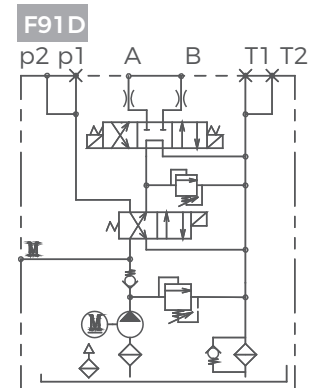




## Aerial Working Platform Power Pack 9

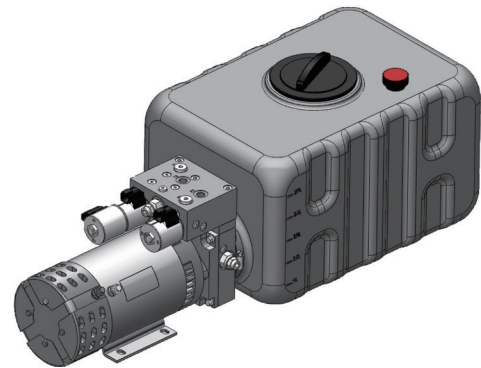
### Introduction

1. High-pressure gear oil pump / DC motor / Double acting
2. Internal filter element
3. Large capacity oil tank with large opening cap

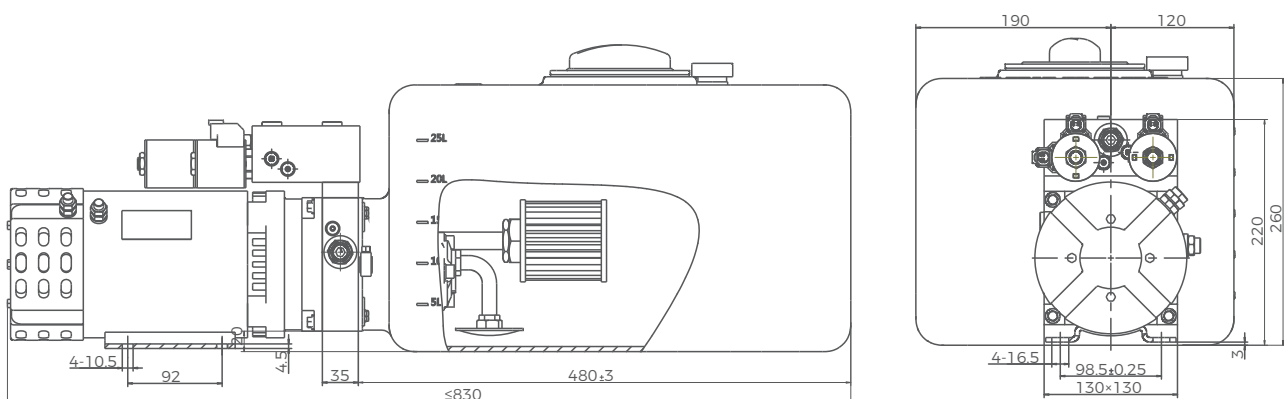


### Technical Data

Model	DC-F91D-4.8/E-4.5/48/24-28PH-C
Voltage	DC48V
Power	4.5kW
Speed	2750rpm
Disp.	4.8cc/r
Pressure	15MPa
Volume	28L
Size	A, B, P1, P2, T1, T2, M: G1/4



### Drawing



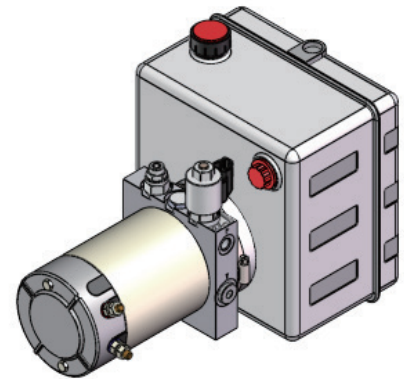
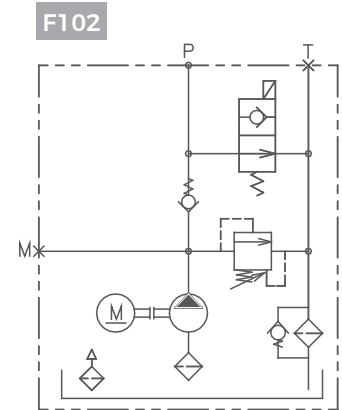
## Aerial Working Platform Power Pack 10

### Introduction

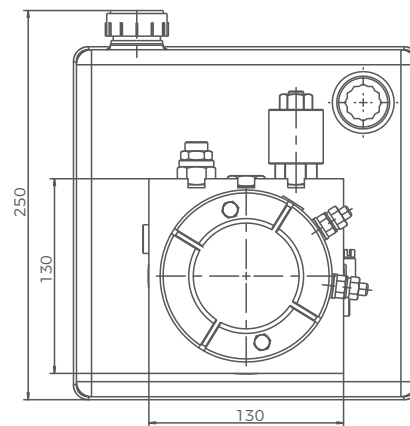
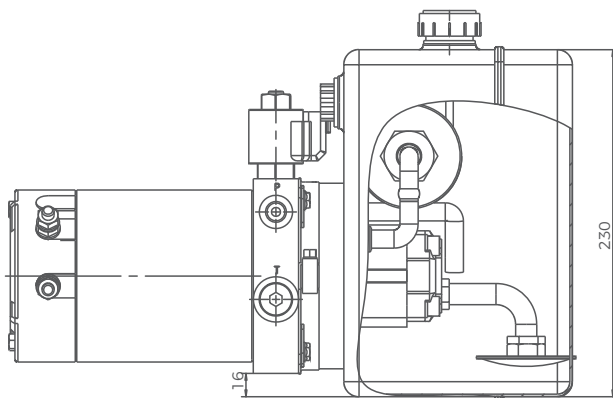
1. High-pressure gear oil pump / DC motor / Single acting
2. Internal filter element

### Technical Data

Model	DC-F102-3.2/F-2.2/24/24-7PBH-C
Voltage	DC24V
Power	2.2kW
Speed	2750rpm
Disp.	3.2cc/r
Pressure	18MPa
Volume	7L
Size	P, M: G1/4; T: G3/8



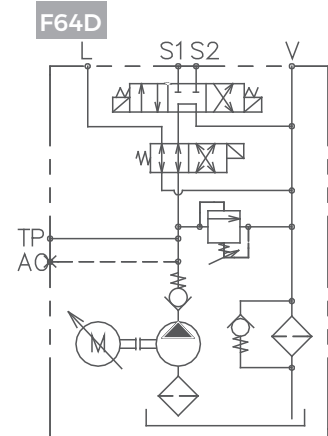
### Drawing



## Aerial Working Platform Power Pack 11

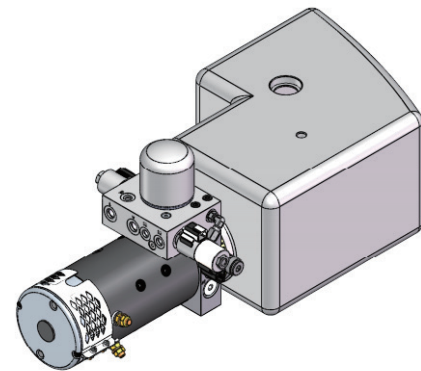
### Introduction

1. High-pressure gear oil pump / DC motor / Double acting
2. External oil return filter

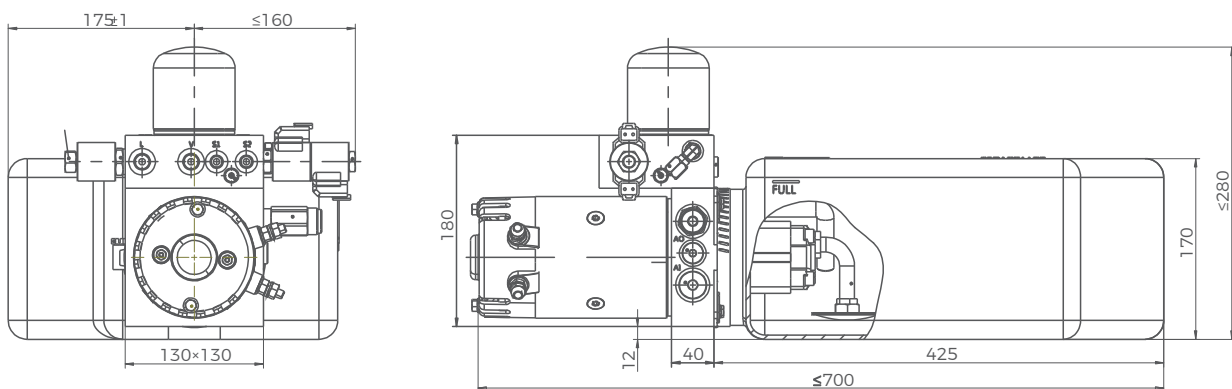


### Technical Data

Model	DC-F64D-2.9/F-2.4/24/20-13PH-FK
Voltage	DC24V
Power	2.4kW
Speed	2700rpm
Disp.	2.9cc/r
Pressure	21Mpa
Volume	13L
Size	S1, S2, T, P: SAE4; L,V: SAE6



### Drawing



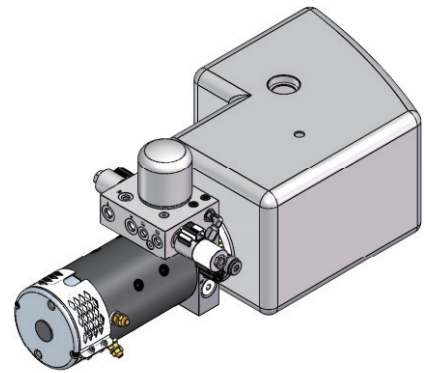
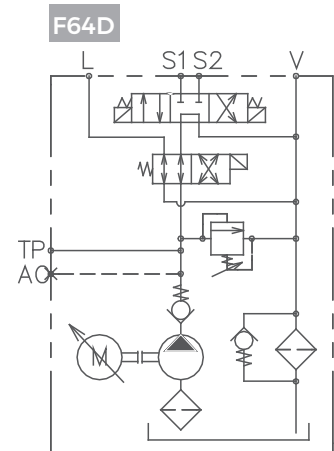
## Aerial Working Platform Power Pack 12

### Introduction

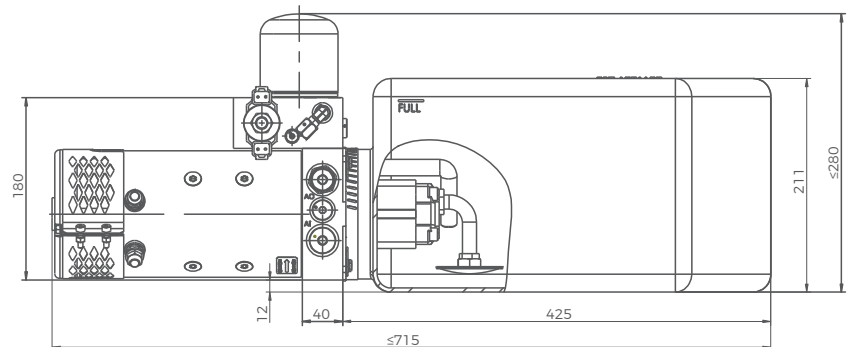
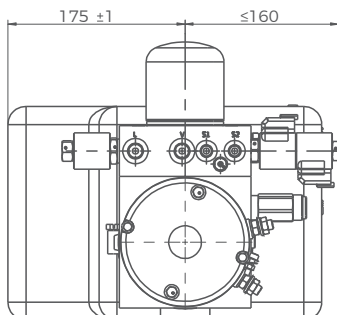
1. High-pressure gear oil pump / DC motor / Double acting
2. Internal filter element
3. Shaped oil tank

### Technical Data

Model	DC-F64D-3.8/F-2.8/24/20-22PH-FK
Voltage	DC24V
Power	2.8kW
Speed	2700rpm
Disp.	3.8cc/r
Pressure	21MPa
Volume	21.6L
Size	S1, S2, T, P: SAE4; L, V: SAE6



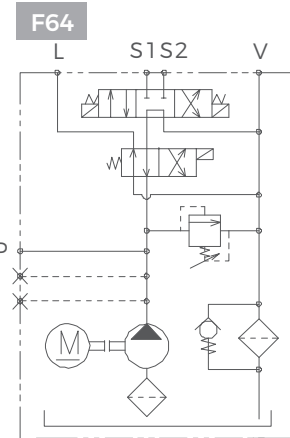
### Drawing



## Aerial Working Platform Power Pack 13

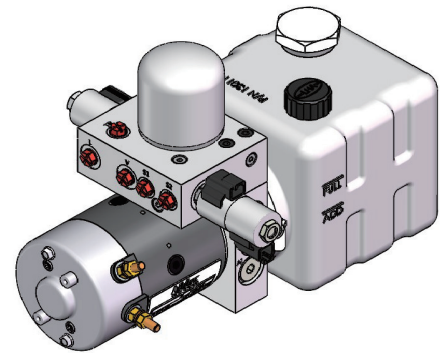
### Introduction

1. High pressure gear oil pump / DC motor / Multipurpose integrated valve block / Hydraulic valve / Tank
2. 3-position 4-way solenoid valve / 2-position 4-way solenoid valve
3. External oil return filter



### Technical Data

Model	DC-F64-1.5/F-2.0-24/20-4PH-FK
Voltage	DC24V
Power	2.0kW
Speed	3100rpm
Disp.	1.5cc/r
Pressure	24.5MPa
Volume	4L
Size	SAE4, SAE6



### Drawing

